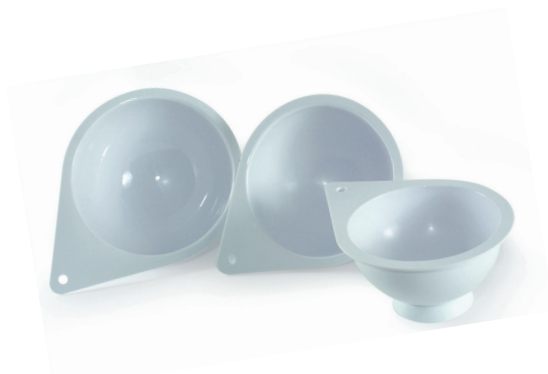




© Maria Mikulasova/Jérôme Villette



**HEMISPHERE MOLD**

Set of 3 hemispheres with base.  
Use to mold chocolate domes and ice cream bombes.  
Made of rigid food grade polymer.

Item #	Ø"
351001	5 1/2, 6 1/4, 7



**EXOPAN STEEL NON-STICK POMPONNETTE MOLD**

Fine steel with a non-stick coating inside and protective enamel outside. Pack of 25.

Item #	Ø"	H"
331803	1 3/5	8/13
331804	1 3/4	9/13
331805	2	11/13
331808	2 1/2	12/13



© Franck Dursin/Jérôme Villette

**HEMISPHERE MOLD**

Made of 18/10 stainless steel. To shape and bake.

Item #	Ø"	H"	Wt oz.	Capacity oz.	Shape
340401	2 3/8	1	1	1 5/8	Pack of 6
340402	2 3/4	1 3/8	2	2 3/4	Pack of 6
340403	3 3/16	1 1/2	2	4 3/8	Pack of 6
340404	4 3/4	2 3/8	4	15 1/4	Each
340405	5 1/2	2 5/8	6	22 5/8	Each
340406	6 1/4	3 3/16	8	33 7/8	Each
340407	7 3/32	3 35/64	13 25/32	50 3/4	Each



**STAINLESS STEEL FLAN MOLD**

Round, plain, very deep mold with edge. Stainless steel. Pack of 6.

Item #	Ø"	H"
342651	2 3/4	1 1/2